



# 河北千木紧固件制造有限公司

HEBEI QIANMU FASTENER MANUFACTURING CO., LTD



河北千木紧固件制造有限公司

Hebei Qianmu Fastener Manufacturing Co. LTD

Tel: 400-0310-002 0310-6693000

Mobile: +86-13831022665 +86-13131031606

Email : sale01@qianmufastener.com

Web : www.qianmufastener.com

Add : 河北省邯郸市永年区恒创工业园区门市5-33

扫一扫微信公众  
Wechat official account



抖音扫一扫  
Tiktok sweep



# 干木紧固件 QIANMU FASTENER

千锤百炼——是我们对产品的要求；  
Thoroughly tempered is our requirement for our products.

“木”量心匠——是我们做事的态度。  
Making products by heart is our attitude to work

## 目录 CATALOG



### >> 公司介绍

我们是一家紧固件制造的企业，位于中国—永年，在紧固件领域已有十余年的制造经验，在质量与产能方面积累了非常雄厚的实力，这也使我们能在一些产品方面处于领先地位。

而且我们拥有紧固方面的专家，使我们在创新与质量把控方面拥有着优势。

我们的市场已经遍布国内并且在海外有了良好的进展：南欧、东欧、中东、东南亚、南非、南美等地区。

### >> Company Introduction

We are a fastener manufacturer, located in Yongnian, China. We have more than ten years of experience in the fastener field, and we have accumulated strong strength in quality and capacity, which enables us to take the leading position in some products.

And we have fastening experts, which gives us an edge in innovation and quality control.

Our market has spread all over the country and has made good progress abroad: Southern Europe, Eastern Europe, Middle East, Southeast Asia, South Africa, South America and other regions.

车修壁虎 德/美 ----- P01  
WEDGE ANCHOR DIN/ANSI

六角木螺丝 ----- P03  
WOOD SCREW

过山丝 (直修丝) ----- P05  
CONFIRMAT SCREW

内迫壁虎 ----- P06  
DROP IN ANCHOR DIN/ANSI

六角螺母套管壁虎 德/美 ----- P07  
SLEEVE ANCHOR WITH HEX NUT

六角螺栓 德/美 ----- P09  
HEX BOLT DIN/ANSI

化学锚栓 ----- P11  
CHEMICAL ANCHOR BOLT

更多产品 ----- P13  
MORE PRODUCTS

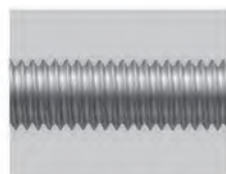
公司展示 ----- P15  
THE COMPANY SHOWS

# 车修壁虎 WEDGE ANCHOR

## 车修壁虎膨胀螺栓 Wedge Anchor



六点式夹片  
six clip



标准DIN螺纹  
Standard DIN thread



DIN125A平垫  
DIN125A Flat Washer



DIN934螺母  
DIN934Nut

### 特性 features

- 不易松动，牢固性强; Not easy to loose, strong fastness.
- 特殊的膨胀部件使锚固力更强; The special expansion parts make the anchorage force stronger.
- 环保锌层更符合环境安全标准; Environmental zinc layer is more in line with environmental safety standard.
- 国际上普遍认可的膨胀件; It is widely recognized as expansive part in the world.

Thread 螺纹规格	drill hole 钻孔直径mm	Length range 长度范围mm	Design drawing force 设计拉拔力KN	Ultimate drawing force 极限拉拔力KN	Design shear force 设计剪切力KN	Ultimate shear force 极限剪切力KN
M6	6	40-120	5	9.7	--	--
M8	8	50-220	8	16	6	9
M10	10	60-250	12	24	8	14
M12	12	70-400	18	33	18	29
M14	14	80-200	20	44	22	37
M16	16	80-300	22	51.8	26	45
M18	18	100-300	28	58	28	57
M20	20	100-400	35	70	31	62
M24	24	120-400	50	113	45	88

Thread 螺纹规格	drill hole 钻孔直径	Length range 长度范围mm	Design pulling force 设计拉拔力KN	Ultimate pulling force 极限拉拔力KN	Design shear force 设计剪切力KN	Ultimate shear force 极限剪切力KN
1/4	1/4(6.35mm)	45-120	5	9.7	--	--
5/16	5/16(8mm)	50-220	8	16	6	9
3/8	3/8(10mm)	60-250	12	24	8	14
1/2	1/2(12.7mm)	70-400	18	33	18	29
5/8	5/8(16mm)	80-200	20	44	22	37
3/4	3/4(19.5mm)	80-300	22	51.8	26	45
1	1(25.4mm)	100-300	28	58	28	57

参数: 电镀>5MM / 热镀>50MM

标准: 德 美 英 材质: 碳钢 不锈钢

应用于:

天然石材, 金属结构, 金属型材, 底板, 支撑板, 托架  
栏杆, 窗, 幕墙  
机器, 大梁, 桁条, 支架等等

Parameter: Electroplate>5MM / Hot dip>50MM

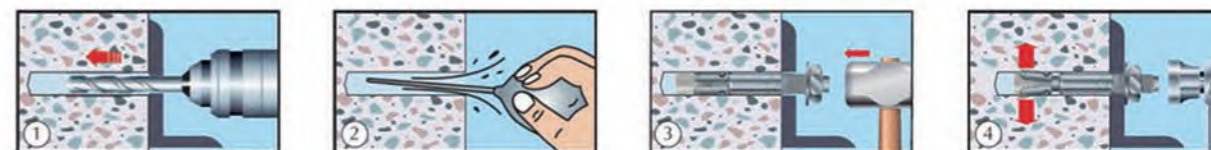
Standard: DIN ANSI BS

Material: carbon steel Stainless Steel

Applied in: natural stone, metal structures, metal  
profiles, bottom plate, support plate, bracket,  
railings, window, curtain wall, machine, beam, beam  
support etc..



### 安装 Install



# 六角木螺丝 WOOD SCREW

六角头木螺丝 Wood Screw



## 特性 features

- 这是针对木头而设计的钉子，固结能力较强; This is a nail designed for wood and has a strong consolidation ability.
- 自攻螺纹安装更方便; Self tapping screw installation is more convenient
- 它是一个标准化产品，质量有保证; It is a standardized product with a guarantee of quality.
- 有效的表面处理工艺; Effective surface treatment process

## 国标规格

M6	M8	M10	M12
M6x30	M8x40	M10x40	M12x80
M6x40	M8x50	M10x50	M12x100
M6x50	M8x60	M10x60	M12x120
M6x60	M8x70	M10x70	M12x140
M6x70	M8x80	M10x80	M12x150
M6x80	M8x90	M10x90	M12x160
M6x90	M8x100	M10x100	M12x180
M6x100	M8x110	M10x120	M12x200
M6x110	M8x120	M10x130	M12x220
M6x120	M8x130	M10x140	M12x240
M6x130	M8x140	M10x150	M12x260
M6x140	M8x150	M10x160	M12x280
M6x150	M8x160	M10x180	M12x300
	M8x170	M10x200	M12x350
	M8x180	M10x220	M12x400
	M8x190	M10x240	
	M8x200	M10x260	
		M10x280	

## 美制规格

1/4	5/16	3/8	1/2
1/4x1	5/16x1	3/8x1	1/2x2
1/4x1-1/4	5/16x1-1/4	3/8x1-1/2	1/2x2-1/2
1/4x1-1/2	5/16x1-1/2	3/8x2	1/2x3
1/4x2	5/16x2	3/8x2-1/2	1/2x4
1/4x2-1/2	5/16x2-1/2	3/8x3	1/2x5
1/4x3	5/16x3	3/8x4	1/2x6
1/4x4	5/16x4	3/8x5	1/2x7
1/4x5	5/16x5	3/8x6	1/2x8
1/4x6	5/16x6	3/8x8	1/2x10
	5/16x8	3/8x10	

参数: 电镀>5MM / 热镀>50MM

标准: 德 美 英 材质: 碳钢

应用于:

天然石材, 金属结构, 金属型材, 底板, 支撑板, 托架  
栏杆, 窗, 幕墙

机器, 大梁, 桁条, 支架等等

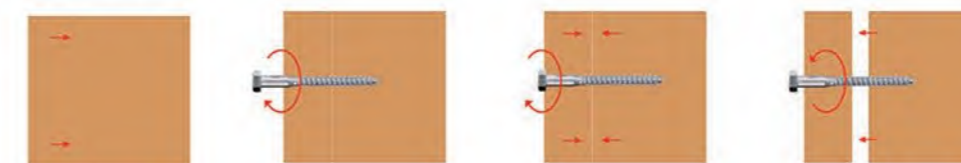
Parameter: Electroplate>5MM / Hot dip>50MM

Standard: DIN ANSI BS

Material: carbon steel

Applied in: natural stone, metal structures, metal  
profiles, bottom plate, support plate, bracket,  
railings, window, curtain wall, machine, beam, beam  
support etc..

## 安装 Install



Thread 螺纹规格	Nut thickness 螺母厚度	Edge of a nut 螺母对边	drill hole 钻孔直径	Wrench Size 扳手尺寸
M6	4	10	6mm	10
M8	5.0-5.2	13	8mm	13
M10	6.0-6.2	17	10mm	17
M12	8.0-8.2	19	12mm	19

注: 国标为GB102-86 德标DIN571



# 过山丝 (直修螺丝) CONFIRMAT SCREW

过山丝 (直修螺丝) Confirmat Screw



技术数据 Technical data

Thread 螺纹规格	length 长度	1000pcs/kgs 千只重	Number 件装数量
M5	40	3.1	8100
M5	50	4	6250
M6	40	5	5000
M6.3	40	5	5000
M6.3	45	5.5	4500
M6.3	50	6	4100
M7	38	6	4100
M7	45	6.7	3700
M7	50	7.1	3500
M7	60	8.8	2800
M7	70	9.8	2600
M8	75	15	1700

技术数据 Technical data

Thread 螺纹规格	length 长度	1000pcs/kgs 千只重	Number 件装数量
M5	40	3.2	7800
M5	50	4	6300
M7	35	5.6	4400
M7	38	6.1	4100
M7	50	7.5	3300
M7	60	9	2800
M7	70	10	2500

## 特性 Features

- 安装快捷方便, 节省安装时间; Installation is quick and convenient, saving installation time
- 表面镀锌处理光亮, 不易腐蚀; Surface galvanized treatment bright, not easy to corrosion
- 适用于多种家具木制品; Suitable for a variety of furniture wood products
- 对于家具对接牢固不易晃动; For furniture butt firm not easy to shake

## 安装 Install



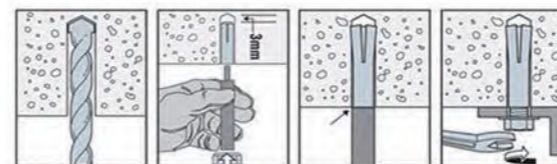
## 内迫壁虎 Drop in Anchor



技术数据 Technical data

Thread 螺纹规格	Pull out load 拔出载荷 (kgs)	Thread 螺纹直径	drill hole 钻孔直径	length 长度	1000pcs/kgs 千只重	Number 箱装数量
M6	980	6	8mm	25mm	5.7	4000
M8	1350	8	10mm	30mm	10	2000
M10	1950	10	12mm	40mm	20	1000
M12	2900	12	16mm	50mm	50	500
M14	--	14	18mm	55mm	64	350
M16	4850	16	20mm	65mm	93	250
M20	5900	20	25mm	80mm	200	100

## 安装 Install



## 无滚花内迫壁虎 W II型



Thread 螺纹规格	drill hole 钻孔直径	length 长度	Number 箱装数量
M6	8mm	25mm	4000
M8	10mm	30mm	2000
M10	12mm	40mm	1000
M12	16mm	50mm	500
M14	18mm	55mm	350
M16	20mm	65mm	250
M20	25mm	80mm	100

## 法兰翻边无滚花内迫壁虎 F III型



Thread 螺纹规格	drill hole 钻孔直径	length 长度	Number 箱装数量
M6	8mm	25mm	4000
M8	10mm	30mm	2000
M10	12mm	40mm	1000
M12	16mm	50mm	500
M14	18mm	55mm	350
M16	20mm	65mm	250
M20	25mm	80mm	100

## 半滚花外迫壁虎 W IV型



Thread 螺纹规格	drill hole 钻孔直径	length 长度	Number 箱装数量
M6	8mm	25mm	4000
M8	10mm	30mm	2000
M10	12mm	40mm	1000
M12	16mm	50mm	500
M14	18mm	55mm	350
M16	20mm	65mm	250
M20	25mm	80mm	100

## 内迫壁虎安装工具



## 特性 Features

- 安装方便; Easy to install
- 电镀锌, 不易生锈; Electrogalvanizing is not easy to rust
- 良好的扩张性, 良好的膨胀性能; Good expansibility
- 接触面积大, 拔脱强度高; Large contact area and high pullout strength

# 外六角螺母套管壁虎 SLEEVE ANCHOR WITH HEX NUT ANSI



外六角螺母套管壁虎 美制 Sleeve Anchor With Hex Nut ANSI



标准:德 美 材质:碳钢 不锈钢  
应用范围:混凝土薄壁和实心砌体。  
表面处理:蓝白锌, 彩锌,热镀锌  
等级:2级、5级、4.8级、6.8级、8.8级

Standard : DIN ANSI Material: Carbon Steel, Stainless Steel  
Applications: Thin sections of Concrete and Solid Masonry.  
Surface Treatment: BZP,YZP,HDG  
Grade: Grade 2,Grade 5,Grade 4.8,Grade 6.8,Grade 8.8

## 特性 Features

安装简单, 牢固性强: Simple installation, strong fastness

多场景使用适配度强, 主要用于混凝土墙, 实心砖等墙体: Strong adaptability for multiple scenarios, It is mainly used for concrete walls, solid bricks and other walls.

自有表面处理厂, 每一道工艺实时把握: Own surface treatment plant, each process real-time grasp

## 技术参数 Technical data

Size 规格	Thread 螺纹	Drill Diameter 钻头直径	Length 长度
1/4" x 5/16" x 1-1/2"	1/4"-20UNC	5/16"	1-1/2"
5/16" x 3/8" x 2-1/2"	5/16"-18UNC	3/8"	2-1/2"
5/16" x 3/8" x 3"	5/16"-18UNC	3/8"	3"
3/8" x 1/2" x 2-3/4"	3/8"-16UNC	1/2"	2-3/4"
3/8" x 1/2" x 3"	3/8"-16UNC	1/2"	3"
1/2" x 5/8" x 5"	1/2"-13UNC	5/8"	5"
5/8" x 3/4" x 4-1/4"	5/8"-11UNC	3/4"	4-1/4"
M6 x 8 x 65	M6-P1.0	8mm	65mm
M8 x 10 x 75	M8-P1.25	10mm	75mm
M8 x 10 x 120	M8-P1.25	10mm	120mm
M10 x 12 x 80	M10-P1.5	12mm	80mm
M10 x 12 x 100	M10-P1.5	12mm	100mm
12 x 16 x 120	M12-P1.75	16mm	120mm



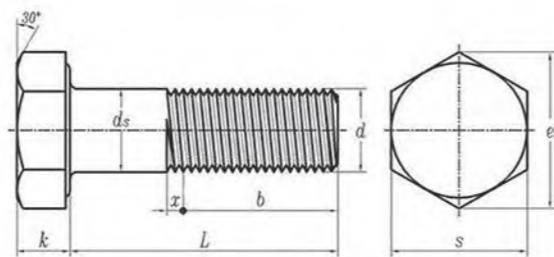
## 安装 Install



# 六角螺栓 HEX BOLT



六角螺栓 美制/德标 Hex Bolt ANSI-2465 DIN-931



## 技术数据 Technical data

Thread 螺纹规格 d	distance 螺距 p	k				S		
		A max	B min	A max	B min	max	min A B	
M6	1	4.15	3.85	4.24	3.76	10	9.78	9.64
M8	1.25	5.45	5.15	5.54	5.06	13	12.73	12.57
M10	1.5	6.58	6.22	6.69	6.11	16	15.73	15.57
M12	1.75	7.86	7.32	7.79	7.21	18	17.73	17.57
M14	2	8.98	8.62	9.09	8.51	21	20.67	20.16
M16	2	10.18	9.82	10.29	9.71	24	23.67	23.16
M18	2.5	11.72	11.29	11.85	11.15	27	26.67	26.16
M20	2.5	12.72	12.29	12.85	12.15	30	29.67	29.16
M22	2.5	14.22	13.79	14.35	13.65	34	33.38	33

Thread 螺纹规格 d	PP		ds		s			e		k		B		x	
	UNC	UNF	最大值	最小值	公称	最大值	最小值	最大值	最小值	公称	最大值	最小值	L≤6		L>6
1/4	20	28	0.25	0.245	7/16	0.438	0.428	0.505	0.488	5/32	0.163	0.15	0.75	1	0.25
5/16	18	24	0.3125	0.3065	1/2	0.5	0.489	0.577	0.557	13/64	0.211	0.195	0.875	1.125	0.278
3/8	16	24	0.375	0.369	9/16	0.562	0.551	0.65	0.628	15/64	0.243	0.226	1	1.25	0.312
7/16	14	20	0.4375	0.4305	5/8	0.625	0.612	0.722	0.698	9/32	0.291	0.272	1.125	1.375	0.357
1/2	13	20	0.5	0.493	3/4	0.75	0.736	0.866	0.84	45/64	0.323	0.302	1.25	1.5	0.385
9/16	12	18	0.5625	0.5545	13/16	0.812	0.798	0.938	0.91	23/64	0.371	0.348	1.375	1.625	0.417
5/8	11	18	0.625	0.617	15/16	0.938	0.922	1.083	1.051	25/64	0.403	0.378	1.5	1.75	0.455
3/4	10	16	0.75	0.741	1-1/8	1.125	1.1	1.299	1.254	15/32	0.483	0.455	1.75	2	0.5
7/8	9	14	0.875	0.866	1-5/16	1.312	1.285	1.516	1.465	35/64	0.563	0.531	2	2.25	0.556
1	8	12	1	0.99	1-1/2	1.5	1.469	1.732	1.675	39/64	0.627	0.591	2.25	2.5	0.625
1-1/8	7	12	1.125	1.114	1-11/16	1.688	1.631	1.949	1.859	45/64	0.718	0.658	2.5	2.75	0.714
1-1/4	7	12	1.25	1.239	1-7/8	1.875	1.812	2.165	2.066	25/32	0.813	0.749	2.75	3	0.714
1-3/8	6	12	1.375	1.363	2-1/16	2.062	1.994	2.382	2.273	27/32	0.878	0.81	3	3.25	0.833
1-1/2	6	12	1.5	1.488	2-1/4	2.25	2.175	2.598	2.48	37/64	0.974	0.902	3.25	3.5	0.833

## 特性 Features

不易松动，牢固性强；Not easy to loosen, strong fastness

多种硬度适用于多种场景；Multiple hardness is suitable for multiple scenarios

不同环境选择相应的螺栓，达克罗，热镀，电镀，粉末镀等产品；Different environment selection of appropriate bolts, Dacro, Hot-dip Galvanizing, Electric Galvanizing, Powder Galvanizing and other products.

参数：电镀>5mm/热镀>50mm

标准：德美英 材质：碳钢 不锈钢

适用于：船舶，机械，钢结构，化工，机械

Parameters: Electroplate>5MM/ Hot dip>50MM

Standard:DIN ANSI BS

Material: Carbon Steel Stainless Steel

Suitable for: ship, machinery, steel structure, chemical industry, machinery



# 化学锚栓 CHEMICAL ANCHOR BOLT

化学锚栓 Chemical Anchor Bolt



## 注意事项 Note

- 用电锤钻孔  
Drilling with an electric hammer
- 清洁钻孔(三吹两刷);可在潮湿环境中安装,但必须将积水彻底排出,同时固化时间按要求加倍延长  
Clean drilling holes(Three blows and two brushes);It can be installed in a humid environment, but the accumulated water must be completely drained,and the curing time should be doubled as required.
- 插入胶管于孔中,尽可能将化学胶管中空隙较多部分向外  
Insert the rubber hose into the hole, and outwards the parts with more gaps in the chemical hose as far as possible.
- 用电锤或冲击敲击并伴随旋转螺杆(旋转速率250-750转/分钟之间)至固深度(杆上标记线)同时目视有少量胶液溢出即可。  
Strike with an electric hammer or impact and accompanied by rotating screw (rotating plastic rate between 250-750 RPM )to solid depth (mark line on the rod) at the same time there is a small amount of glue overflow can be visually.
- 固化时间内严禁扰动螺杆,以防锚固失效  
It is strictly prohibited to disturb the screw during the curing time to prevent anchorage failure

## 技术参数 Technical data

型号	M8	M10	M12	M14	M16	M18	M20	M22	M24	M30
钻孔深度	80	90	110	120	130	150	170	190	210	280
设计拔力 (KN)	7	12	18	20	22	28	35	47	50	76
极限拔力 (KN)	19	29	46	53	61	80	99	120	140	230
设计剪力 (KN)	6	8	18	22	26	28	31	38	45	65
极限剪力 (KN)	9	14	29	37	45	57	62	75	88	135

## 安装数据 Installation data

型号	M8	M10	M12	M14	M16	M18	M20	M22	M24	M30
最小基材厚度 (MM)	100	130	160	170	180	200	220	240	260	330
钻孔直径 (MM)	10	12	14	16	18	22	24	24	28	35
钻孔深度 (MM)	80	90	110	120	130	150	170	190	210	280
胶管长度 (MM)	75	85	105	115	125	145	165	185	205	275
金属螺杆长度 (MM)	110	130	160	175	190	230	260	280	300	380
最大扭紧扭矩 (Nm)	13	20	30	45	60	90	120	160	200	400

标准:德 美 英 材质:碳钢 不锈钢  
应用范围:混凝土薄壁和实心砌体。  
表面处理:蓝白锌,彩锌,热镀锌  
等级:4.8级、6.8级,8.8级

Standard: DIN ANSI BS Material: Carbon Steel, Stainless Steel  
Applications: Thin sections of Concrete and Solid Masonry.  
Surface Treatment: BZP,YZP,HDG  
Grade: 4.8,Grade 6.8, Grade 8.8, Grade

### ① 强度

力用KN和N表示  
1KN=1000N=100DN≈100KG  
10N=1DN≈1KG

### ② 等级

4.8、6.8、8.8  
4.8级表示公称抗拉强度达400MPa  
屈强比值为0.8  
公称屈服强度达400×0.8=320MPa

### ③ 美制/ANSI

牙形角度60°  
牙数: 1/4=20 5/16=18 3/8=16  
1/2=13 5/8=11 3/4=10  
1=8

### ③ 英制/BS

牙形角度55°  
牙数: 1/4=20 5/16=18 3/8=16  
1/2=12 5/8=11 3/4=10  
1=8

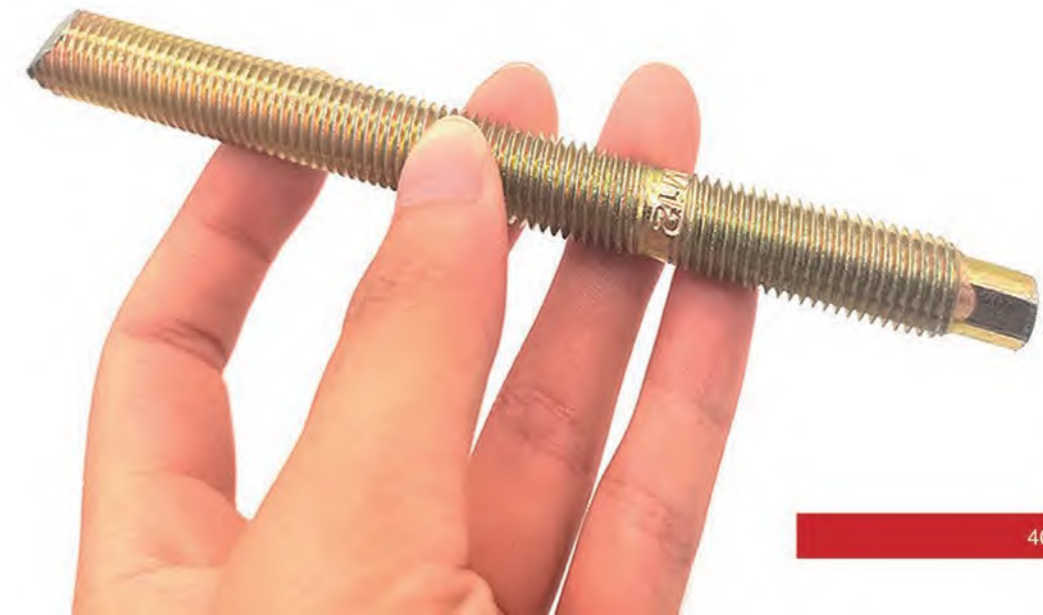
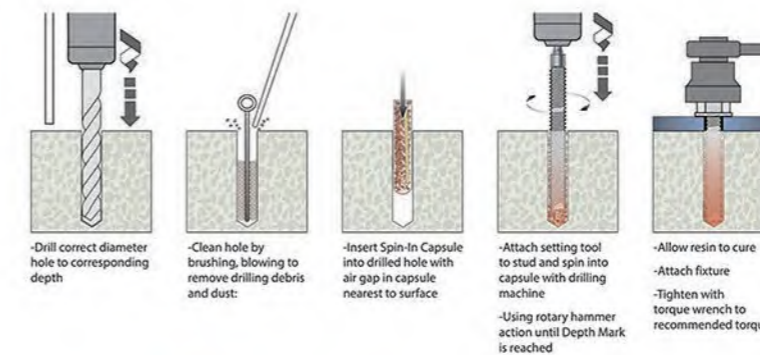
### ③ 国标/GB

牙形角度60°  
牙距: M6=1 M8=1.25 M10=1.5  
M12=1.75 M14=2 M16=2  
M18=2.5 M20=2.5 M24=3  
M30=3.5

### ③ 表面处理

电镀锌: ≈5μm  
热镀锌: ≈50μm  
达克罗: ≈4-8μm  
粉末渗锌: ≈50μm

## 安装 Install





更多产品 MORE PRODUCTS

更多产品 More Products



四片O型壁虎  
O Type Shield Anchor



四片C型壁虎  
C Type Shield Anchor



防滑鱼翅壁虎  
Shark Fin Sleeve Anchor



纤维板钉  
Chipboard screw



干壁钉  
DryWall Screw



华司头自钻丝  
Truss self-drilling Screws



平头自钻丝  
Flat Head Self Drilling Screw



六角自钻丝  
Hexagon Head Self Drilling Screw



六角头自钻丝带复合垫  
Hex Self-drilling screw with EPDM Washer



六角螺母  
Hexagon Nut



法兰螺母  
Flange nut



尼龙防松螺母  
Nylon Lock Nut



地脚螺栓  
Foundation Bolt



窗式壁虎  
Metal Frame Anchor



丝杆  
Thread Rod



马车栓  
Carriage Bolt



平垫  
Flat washer



弹垫  
Spring washer



# 实力展示 SHOW OF STRENGTH

实力展示 Show Of Strength



**2021年9月新厂区坐落于成安工业区  
总占地20000平**

In September 2021, the new factory is located in Cheng'an Industrial Zone  
A total area of 20,000 square meters



仓库内部 Warehouse interior



工厂内部 Inside the factory



运营中心 Operation center

资质荣誉 Qualification Honor



**总经理：魏峰**  
General Manager: Wei Feng

制造业作为国家强盛之根基，无论是在世界互联的今天还是充满想象的未来，  
As the foundation of a strong and prosperous country, whether in the world of Internet today or full of imagination in the future  
一直在迎接挑战与支撑世界，我们千木人也愿同你一起踏上征程，我也相信我们的  
,Manufacturing industry has been meeting challenges and supporting the world. Qiangmu people are willing to embark on the journey together with you.  
产品担得起“千锤百炼，‘木’量心匠”。  
I also believe that our products can afford to be "Thoroughly tempered, Making products by heart."