



# SensoVision

Taking Research into Product

**TRUST**

**QUALITY**

**INTEGRITY**

---

[www.sensoviz.com](http://www.sensoviz.com)





**50+**

Successful Installations



**250+**

Part Profiles



**15+**

Product Designs

In the Era of Industry 4.0, SensoVision emerges as a leading manufacturer of 100% Visual Inspection and Sorting Machines for Fasteners, Auto Components and Electronic Components.

Our Products have been a vital tool in achieving the highest quality end products.

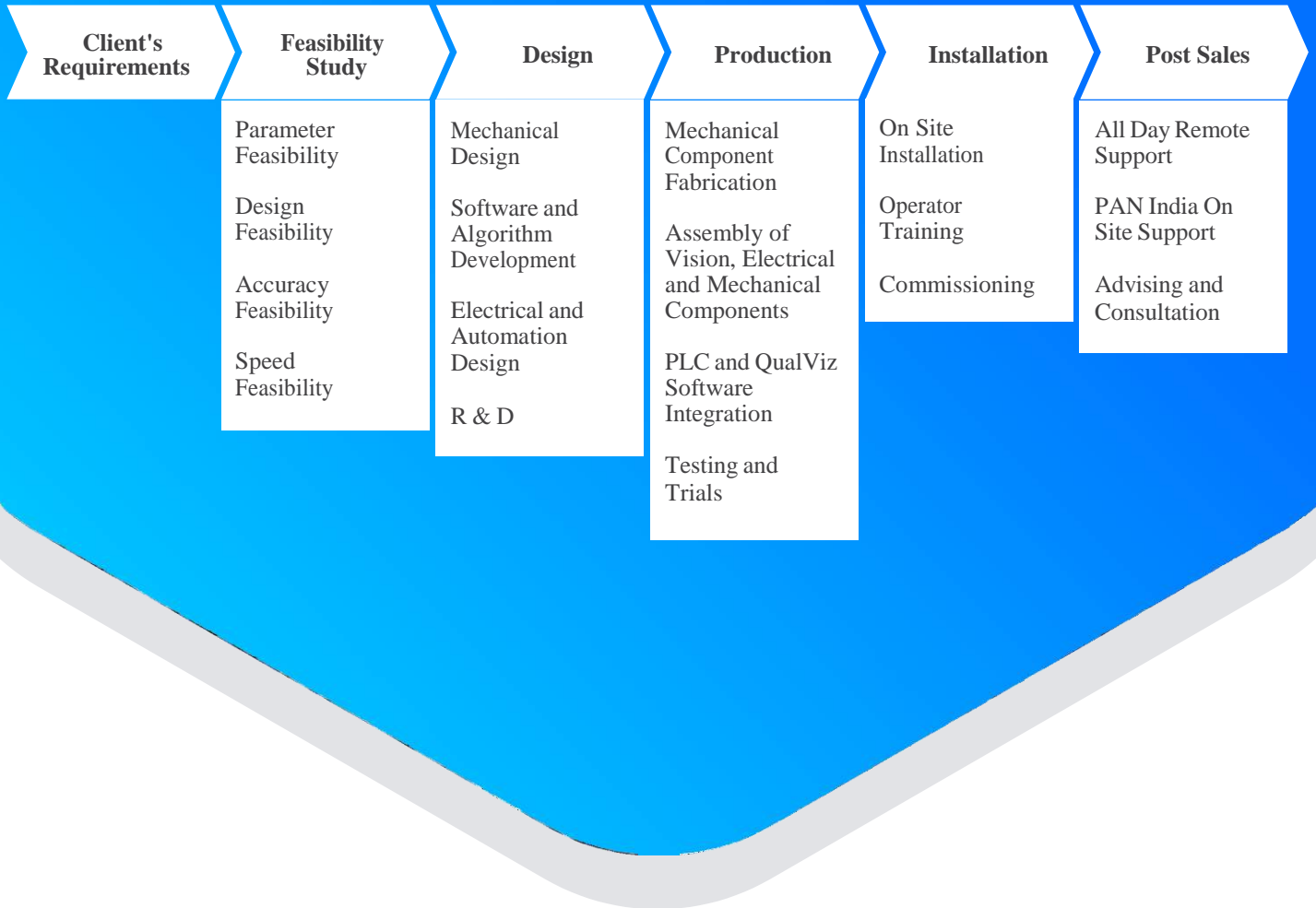


# HOW WE DO IT?

SensoVision develops totally customized End to End Inspection Solutions with our In-House Software, Electrical, Design and Fabrication team which together thrive to provide the best solution to all of your esteemed clients.

Our support team makes sure that any issue is resolved in no time. This has encouraged our clients to be a repeat

customer.



# CLIENT RELATIONS

For Manufacturers thriving towards achieving ZERO DEFECTS Goal, a 100% Visual Inspection Based Sorting Solution is inevitable and a crucial investment.

From the problem statement realization to Post-Sales support, our Goal has always been to be detailed and transparent to our Clients along each stage process.

**QVM**

**Slotted Metal Plate**

Visual Inspection On  
Headed Fasteners  
Like Screws, Bolts  
and Rivets

**QVG**

**Glass Dial**

Visual Inspection For Parts  
Like Washers, Nuts,Rings,  
Bolts and Brass Inserts

**QVGG**

**Glass Dial**

Visual Inspection for  
Small Non Headed  
Fasteners Like Grub  
Screws,Studs Etc.

**QVC**

**Conveyor Setup**

Visual Inspection For Parts  
Like Washers, Nuts,Rings  
and Bolts

**QVMM**

**Mini Slotted Plate**

Visual Inspection for  
Small Screws and  
Rivets

**QVAC**

**Customized Conveyor  
Setup**

Visual Inspection for auto  
components like Gear  
Sprocket, Piston Rings,  
Bushes, Iron  
Inserts

**QVGF**

**V-Groove Gravity Feed**

Visual Inspection On  
Non Headed Fasteners  
Like Studs,Grub Screws  
and Pins.

**QVS**

**Static Manual Feed  
Setup**

Visual Inspection on all  
type of Fasteners with  
Manual Feed and  
Rejection.

# 100% INSPECTION

SensoVision Offers Fully Customized End to End  
Automated Solution with more than 10 Existing Models,and  
High Expertise in Inspection Solution Development.  
Our Products are tailor made to suffice the exactrequirement  
of our customers

## PURPOSE

**Visual Defect and Dimensional Measurement based Sorting with Auto Feed and Auto Ejection**

Equipped with State Of the Art Automation and QualViz Software Capable of Dimensional Measurements and Surface Defect Identification.



- Carriage BoltsEye
- Bolts
- Hex Bolt
- Machine Bolts
- Penta-Head Bolts
- Round Head Bolts
- Shoulder Bolts
- Socket Head Bolts
- T-Head Bolts



- Solid Rivet
- Tubular Rivet
- Blind Rivet
- Drive Rivet
- Split Rivet



- Slotted Flat Head Screw
- Slotted Round Head Screw
- Slotted Oval Head Screw
- Phillips Drive Screw
- Square Drive Screw
- CSK Screw
- Counter Bore Screw

APPLICABLE



# KEY FEATURES

## Unprecedented reliability and precision

- Machine Vision Software
- Accuracy up to  $\pm 20$  microns
- Speed range up to 600 parts/min
- Support up to 7 Camera units

## 'Live' Inspections, Management, Statistics

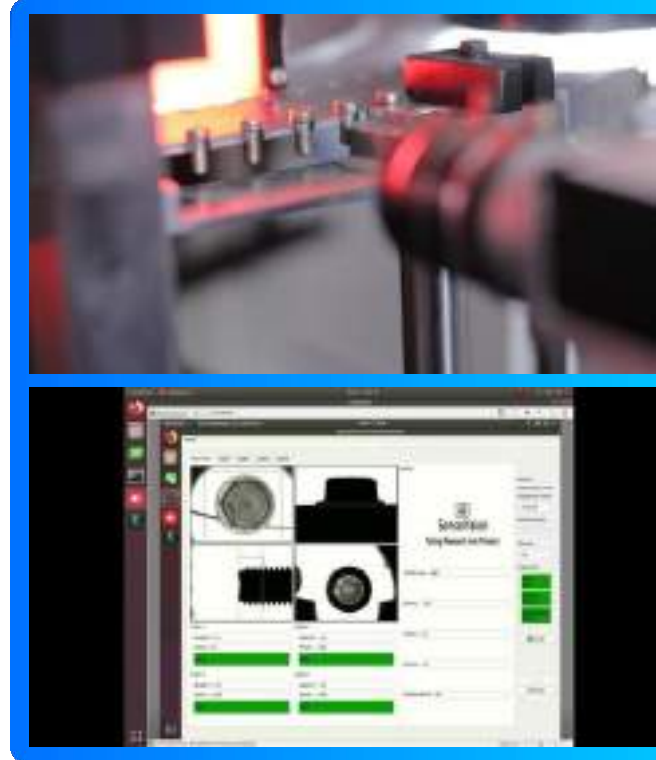
- Real Time Monitoring
- Resident Database SQL
- Remote Control and Setting
- Vision Software Programmable by User
- Statistical Reports easily accessible through UI

## Inspections Made Easy

- Run as a Turn-Key system
- Simple Setup and Adjustments
- Short Setup Time for multiple codes Intuitive
- UI
- Automatic operation 24/7

## Inspection Criteria

- Head Height Thread
- Height Head Dia
- Thread Major
- Thread Angle
- Minor Dia
- Head Side Cracks 360°
- Missing Operation
- Bend
- Dia Mixing
- Length Mixing Thread
- Missing Thread Burrs
- Length Mixing
- Head Max Diameter Head
- Roundness
- Head Top Cracks
- Socket Concentricity Socket
- Blackness
- Socket Broken Punch Slot
- Missing
- Multiple Slot
- Particle in Slot/Socket
- Thread Direction
- Thread Damages



## DATASHEET

### Part's Dimensional Range

Diameter min/max	M3-M8/M10-M16
Height min/max	8-120 mm

### Machine's Specifications

Type	Screw Plate
Speed (max)	250-600 parts/min
Accuracy	$\pm 20$ microns
Machine's Size	35 x 35 x 74 in
No of Cameras	2-7
Requirements	230 V, 4-7 bar

### PURPOS E

**Visual Defect and Dimensional Measurement based Sorting with Auto Feed and Auto Ejection**

Equipped with State Of the Art Automation and QualViz Software Capable of Dimensional Measurements and Surface Defect Identification.



- Iron Insert Brass
- Insert
- Threaded Insert
- Cross Knurling Insert
- Parallel Knurling Insert



- Tapered Section Ring
- Constant Section Ring
- Spiral Retaining Ring
- HO Retaining Ring



- Wing Nut
- Cap Nut
- Hex Nut
- Cross Dowel
- Flange Nut
- Square Nut
- Weld Nut
- Wedge Nut



- Plain Washer Spring
- Washer Locking
- WasherCSK Washer
- 

**APPLICABLE**



# KEY FEATURES

## Unprecedented reliability and precision

- Machine Vision Software
- Accuracy up to  $\pm 20$  microns
- Speed range up to 400 parts/min
- Support up to 7 Camera units

## 'Live' Inspections, Management, Statistics

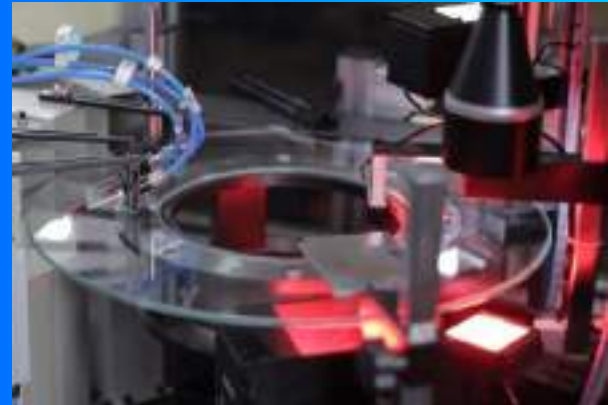
- Real Time Monitoring
- Resident Database SQL
- Remote Control and Setting
- Vision Software Programmable by User
- Statistical Reports easily accessible through UI

## Inspections Made Easy

- Run as a Turn-Key system
- Simple Setup and Adjustments
- Short Setup Time for multiple codes Intuitive
- UI
- Automatic operation 24/7

## Inspection Criteria

- Head Width
- Shank/Tail Dia
- Knurling/Threading ID
- Side Burrs
- Length Mixing
- Top Profile Dimensions
- Inner Thread Presence
- Crack on Head
- Plating Defect on Shank
- Head Height
- Outer Thread Parameters AF/AC
- Bend
- Dia Mixing
- Stud Concentricity
- Top Roundness
- Plating Defects on Head
- Anomaly on Bottom
- Dent/Crack on Shank



## DATASHEET

### Part's Dimensional Range

Diameter min/max	M6-M35
Length min/max	2-25 mm

### Machine's Specifications

Type	Glass Plate
Speed (max)	Up to 400 parts/min
Accuracy	$\pm 20$ microns
Machine's Size	35 x 35 x 74 in
No of Cameras	2-7
Requirements	230 V, 4-7 bar

## PURPOSE

Visual Defect and Dimensional Measurement based Sorting with Auto Feed and Auto Ejection

Equipped with State Of the Art Automation and QualViz Software Capable of Dimensional Measurements and Surface Defect Identification.



- Continuous Thread Stud
- Tap-End Stud
- Double-End Stud

APPLICABLE

# KEY FEATURES

## Unprecedented reliability and precision

- Machine Vision Software
- Accuracy up to  $\pm 20$  microns
- Speed range up to 400 parts/min
- Support up to 7 Camera units

## 'Live' Inspections, Management, Statistics

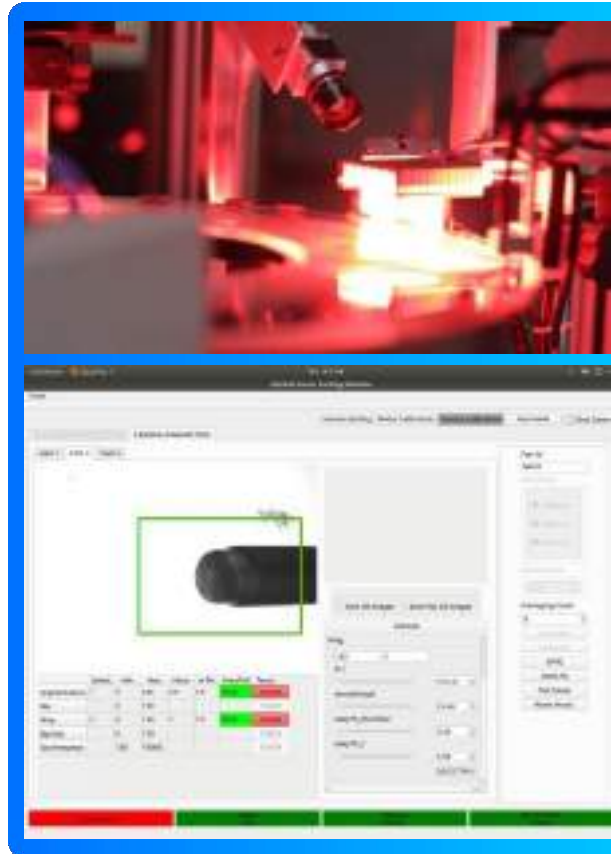
- Real Time Monitoring
- Resident Database SQL
- Remote Control and Setting
- Vision Software Programmable by User
- Statistical Reports easily accessible through UI

## Inspections Made Easy

- Run as a Turn-Key system
- Simple Setup and Adjustments
- Short Setup Time for multiple codes Intuitive UI
- Automatic operation 24/7

## Inspection Criteria

- Total Length
- Thread Length
- Thread Major
- Thread Missing Thread
- Direction Polling position
- Slot Presence/Absence
- Operation Presence/Absence Shank
- Length
- Thread Height Thread
- Angle
- Thread Burrs
- Thread Damages Shank
- Dia
- Multiple Slots



## DATASHEET

### Part's Dimensional Range

Diameter min/max	M3-M8
Thickness min/max	Up to 30mm

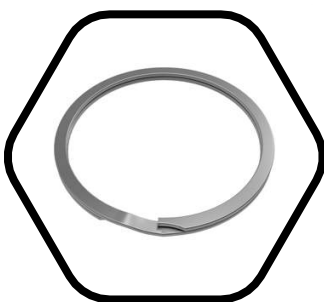
### Machine's Specifications

Type	Glass Plate
Speed (max)	Up to 400 parts/min
Accuracy	$\pm 20$ microns
Machine's Size	35 x 35 x 74 in
No of Cameras	2-7
Requirements	230 V, 4-7 bar

### PURPOSE

Visual Defect and Dimensional Measurement based Sorting with Auto Feed and Auto Ejection

Equipped with State Of the Art Automation and QualViz Software Capable of Dimensional Measurements and Surface Defect Identification.



- Tapered Section Ring
- Constant Section Ring
- Spiral Retaining Ring
- HO Retaining Ring



- Wing Nut
- Cap Nut
- Hex Nut
- Cross Dowel
- Flange Nut
- Square Nut
- Weld Nut
- Wedge Nut



- Plain Washer Spring
- Washer
- Locking WasherCSK
- Washer

APPLICABLE

# KEY FEATURES

## Unprecedented reliability and precision

- Machine Vision Software
- Accuracy up to  $\pm 20$  microns
- Speed range up to 250 parts/min
- Support up to 7 Camera units

## 'Live' Inspections, Management, Statistics

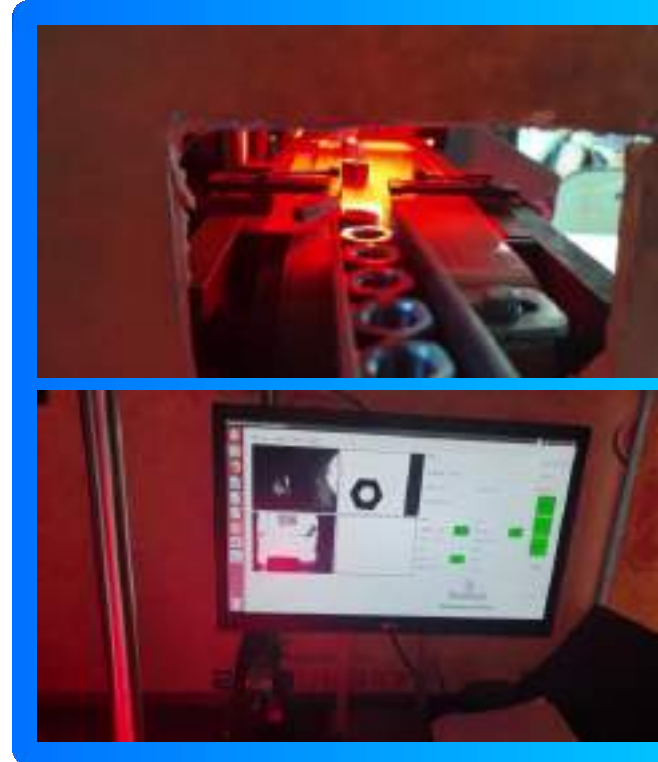
- Real Time Monitoring
- Resident Database SQL
- Remote Control and Setting
- Vision Software Programmable by User
- Statistical Reports easily accessible through UI

## Inspections Made Easy

- Run as a Turn-Key system
- Simple Setup and Adjustments
- Short Setup Time for multiple codes Intuitive
- UI
- Automatic operation 24/7

## Inspection Criteria

- Multiple Heights
- Multiple Widths
- Outer Knurling Measurements
- Outer Chamfer Angle
- Head AC Head
- AF
- ID and OD for Nut kind of parts
- ID/OD Burr
- Inner Thread Presence
- Half Thread Presence



## DATASHEET

### Part's Dimensional Range

Diameter min/max	M6-M35
Length min/max	2-25 mm

### Machine's Specifications

Type	Conveyor Based
Speed (max)	Up to 250 parts/min
Accuracy	$\pm 20$ microns
Machine's Size	35 x 35 x 74 in
No of Cameras	1-3
Requirements	230 V, 4-7 bar



### PURPOSE

Visual Defect and Dimensional Measurement based Sorting with Auto Feed and Auto Ejection

Equipped with State Of the Art Automation and QualViz Software Capable of Dimensional Measurements and Surface Defect Identification.



APPLICABLE



- Carriage Bolts
- Eye Bolts
- Hex Bolt
- Machine Bolts
- Penta-Head Bolts
- Round Head Bolts
- Shoulder Bolts
- Socket Head Bolts
- T-Head Bolts



- Solid Rivet
- Tubular Rivet
- Blind Rivet
- Drive Rivet
- Split Rivet



- Slotted Flat Head Screw
- Slotted Round Head Screw
- Slotted Oval Head Screw
- Phillips Drive Screw
- Square Drive Screw
- CSK Screw
- Counter Bore Screw



# KEY FEATURES

## Unprecedented reliability and precision

- Machine Vision Software
- Accuracy up to  $\pm 20$  microns
- Speed range up to 250 parts/min
- Support up to 7 Camera units

## 'Live' Inspections, Management, Statistics

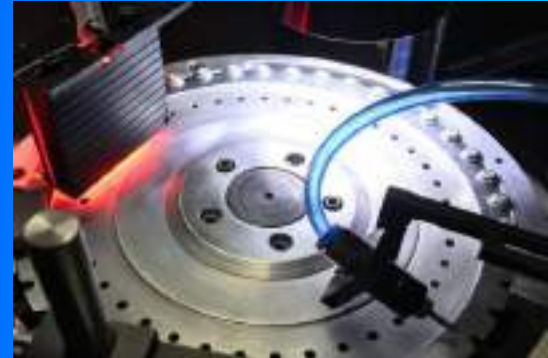
- Real Time Monitoring
- Resident Database SQL
- Remote Control and Setting
- Vision Software Programmable by User
- Statistical Reports easily accessible through UI

## Inspections Made Easy

- Run as a Turn-Key system
- Simple Setup and Adjustments
- Short Setup Time for multiple codes Intuitive
- UI
- Automatic operation 24/7

## Inspection Criteria

- Thread Height
- Thread Angle
- Thread Missing
- Major Dia Mixing
- Head Max Diameter
- Head Top Cracks
- Socket Blackness/Slot
- Missing
- Particle in Slot/Socket
- Major & Minor Dia
- Missing Operation
- Thread Burrs
- Length Mixing
- Head Roundness
- Socket Concentricity
- Socket Broken Punch/Miss
- Slot



## DATASHEET

### Part's Dimensional Range

Diameter min/max	M2.5-M6
Length min/max	Up to 50 mm

### Machine's Specifications

Type	Screw Plate
Speed (max)	Up to 250 parts/min
Accuracy	$\pm 20$ microns
Machine's Size	25 x 25 x 37 in
No of Cameras	1-3
Requirements	230 V, 4-7 bar

### PURPOSE

**Visual Defects and Dimensional Measurement based Sorting with Manual Feed Auto Ejection**

Equipped with State Of the Art Automation and QualViz Software Capable of Dimensional Measurements and Surface Defect Identification.



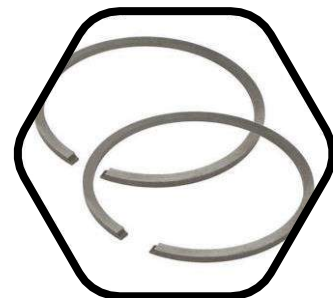
APPLICABLE



- Double Pitch Sprocket
- Multiple Strand Sprocket
- QD Sprocket
- Taper Lock Sprocket
- Steel Split Sprocket Idler
- Sprocket
- Double Single Sprocket
- Double Plus Sprocket



- Iron Casting
- Grey Cast Iron
- Alloy Cast Iron



- Tapered Section Ring
- Constant Section Ring
- Spiral Retaining Ring HO
- Retaining Ring

# KEY FEATURES

## Unprecedented reliability and precision

- Machine Vision Software
- Accuracy up to  $\pm 20$  microns
- Speed range up to 150 parts/min
- Support up to 7 Camera units

## 'Live' Inspections, Management, Statistics

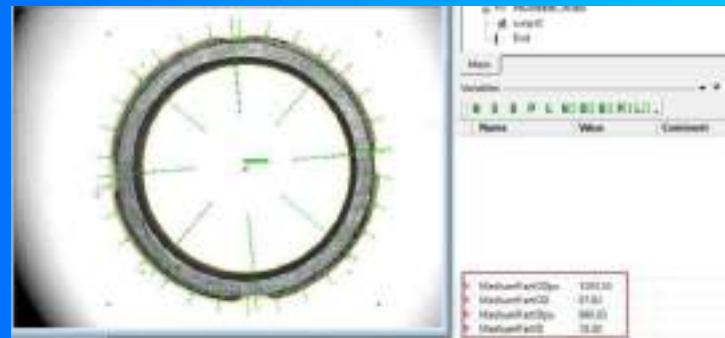
- Real Time Monitoring
- Resident Database SQL
- Remote Control and Setting
- Vision Software Programmable by User
- Statistical Reports easily accessible through UI

## Inspections Made Easy

- Run as a Turn-Key system
- Simple Setup and Adjustments
- Short Setup Time for multiple codes Intuitive
- UI
- Automatic operation 24/7

## Inspection Criteria

- ID/OD
- Teeth Angle Thread
- Major
- Thread Missing
- Thread Direction
- Inner Thread Presence
- Engraving inspection
- Surface Marking Inspection
- Teeth Count
- Thread Height Thread
- Angle Thread Burrs
- Thread Damages
- Chamfer Presence 360°
- Inspection



## DATASHEE

### Part's Dimensional Range

Diameter min/max	30-300 mm
Thickness min/max	1-20 mm

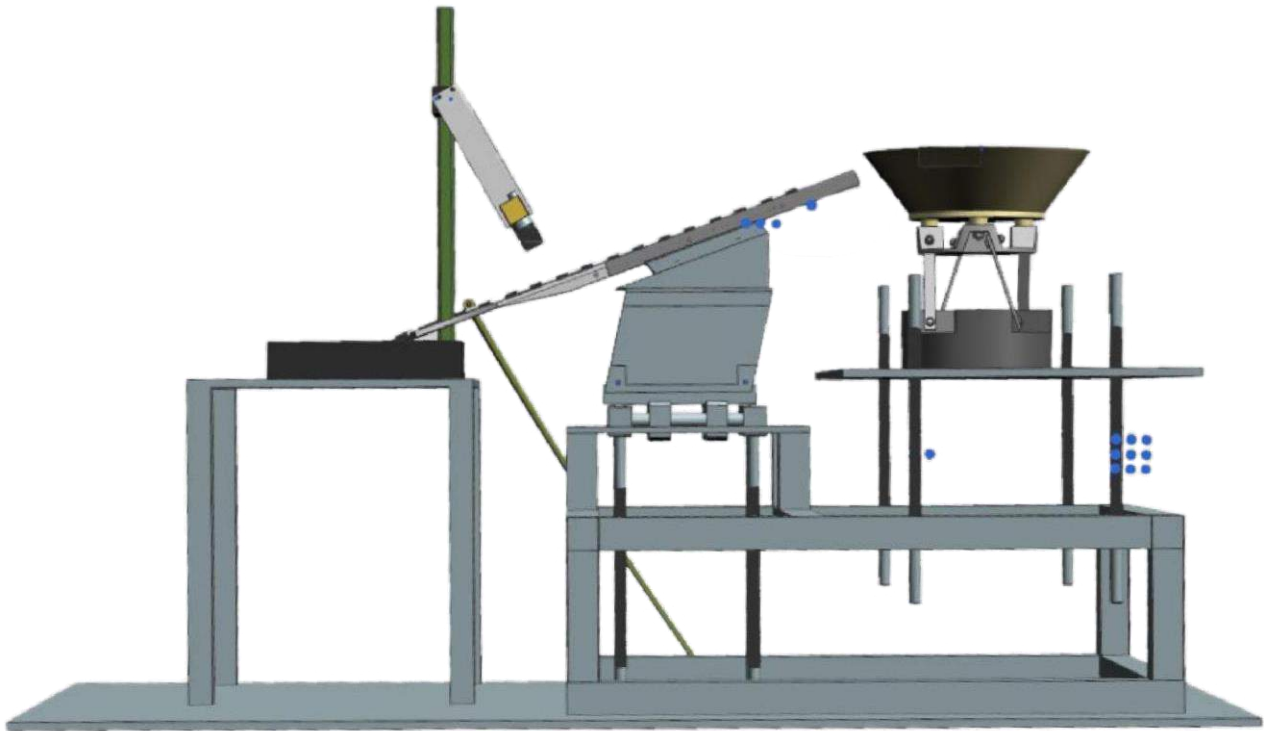
### Machine's Specifications

Type	Conveyor Based
Speed (max)	Up to 150 parts/min
Accuracy	$\pm 20$ microns
Machine's Size	118 x 35 x 74 in
No of Cameras	1-3
Requirements	230 V, 4-7 bar

### PURPOSE

Visual Defect and Dimensional Measurement based Sorting with Auto Feed and Auto Ejection

Equipped with State Of the Art Automation and QualViz Software Capable of Dimensional Measurements and Surface Defect Identification.



APPLICABLE



- Continuous Thread Stud
- Tap-End Stud
- Double-End Stud



- Slotted Grub Screw
- Socket Grub Screw



- Cotter Pin
- Dowel Pin
- Hitch and Lynch PinSpring
- Pin

# KEY FEATURES

## Unprecedented reliability and precision

- Machine Vision Software
- Accuracy up to  $\pm 20$  microns
- Speed range up to 300 parts/min
- Support up to 7 Camera units

## 'Live' Inspections, Management, Statistics

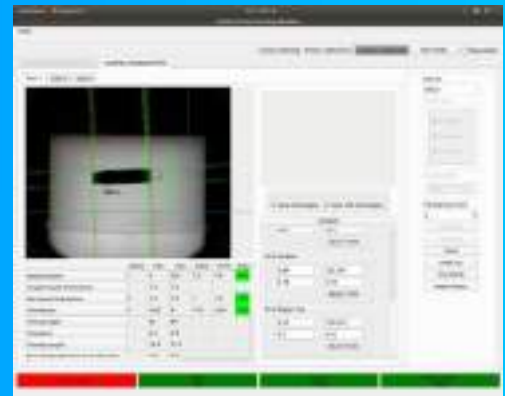
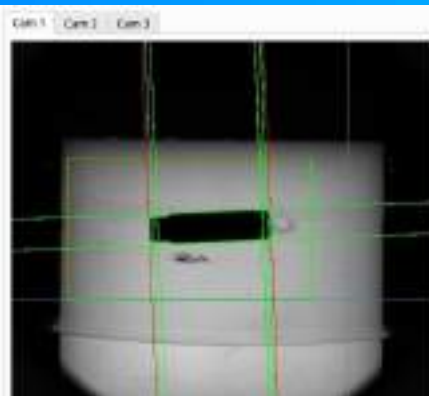
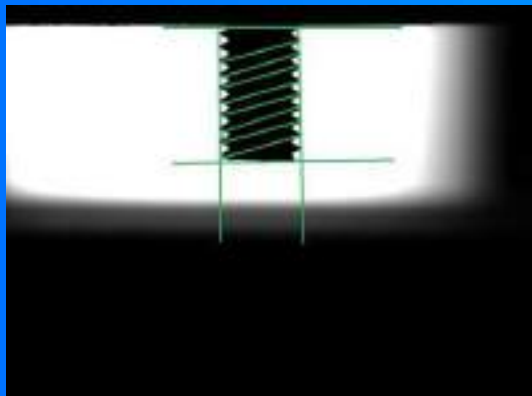
- Real Time Monitoring
- Resident Database SQL
- Remote Control and Setting
- Vision Software Programmable by User
- Statistical Reports easily accessible through UI

## Inspections Made Easy

- Run as a Turn-Key system
- Simple Setup and Adjustments
- Short Setup Time for multiple codes Intuitive
- UI
- Automatic operation 24/7

## Inspection Criteria

- Total Length Shank
- Length
- Thread Length
- Polling position
- Shank Dia



## DATASHEE

### Part's Dimensional Range

Diameter min/max	M4-M24
Thickness min/max	Up to 200mm

### Machine's Specifications

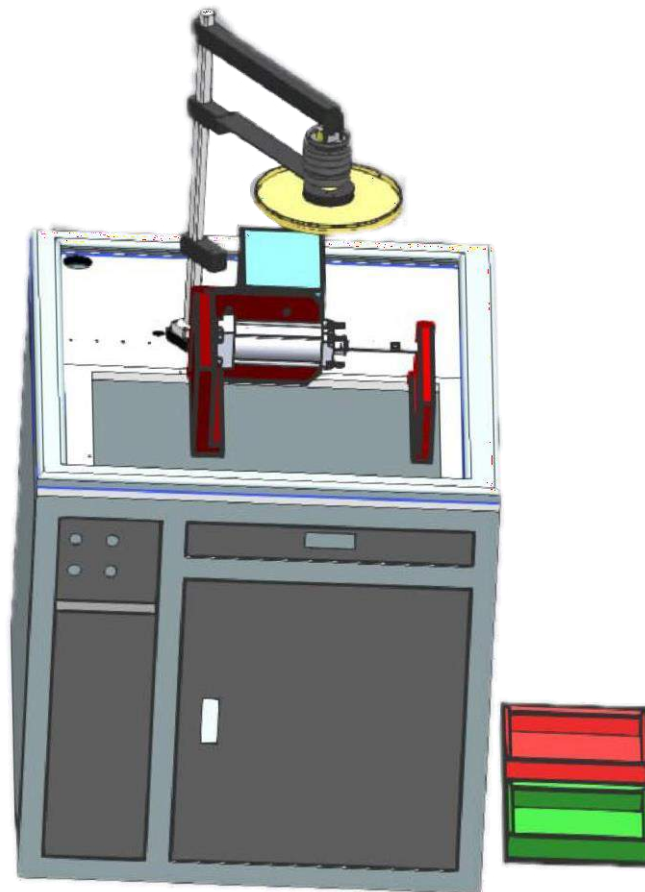
Type	Gravity Feed
Speed (max)	Up to 300 parts/min
Accuracy	$\pm 20$ microns
Machine's Size	35 x 35 x 74 in
No of Cameras	2-7
Requirements	230 V, 4-7 bar



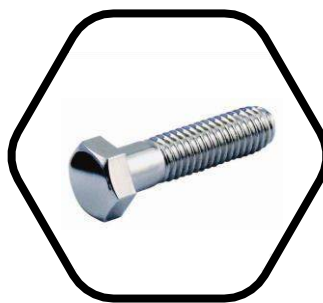
### PURPOSE

#### Dimensional Defects/ Surface Defects Analysis with Manual Feed and Auto Ejection

Equipped with State Of the Art Automation and QualViz Software Capable of Dimensional Measurements and Surface Defect Identification.



- Double Pitch Sprocket
- Multiple Strand Sprocket
- QD Sprocket
- Taper Lock Sprocket
- Steel Split Sprocket Idler
- Sprocket
- Double Single Sprocket
- Double Plus Sprocket



- Carriage BoltsEye
- Bolts
- Hex Bolt
- Machine Bolts
- Penta-Head Bolts
- Round Head Bolts
- Shoulder Bolts
- Socket Head Bolts
- T-Head Bolts



- Wing Nut
- Cap Nut
- Hex Nut
- Cross Dowel
- Flange Nut
- Square Nut Weld
- Nut
- Wedge Nut

**APPLICABLE**



# KEY FEATURES

## Unprecedented reliability and precision

- Machine Vision Software
- Accuracy up to  $\pm 10$  microns
- Support up to 2 Camera units

## 'Live' Inspections, Management, Statistics

- Real Time Monitoring
- Resident Database SQL
- Remote Control and Setting
- Vision Software Programmable by User
- Statistical Reports easily accessible through UI

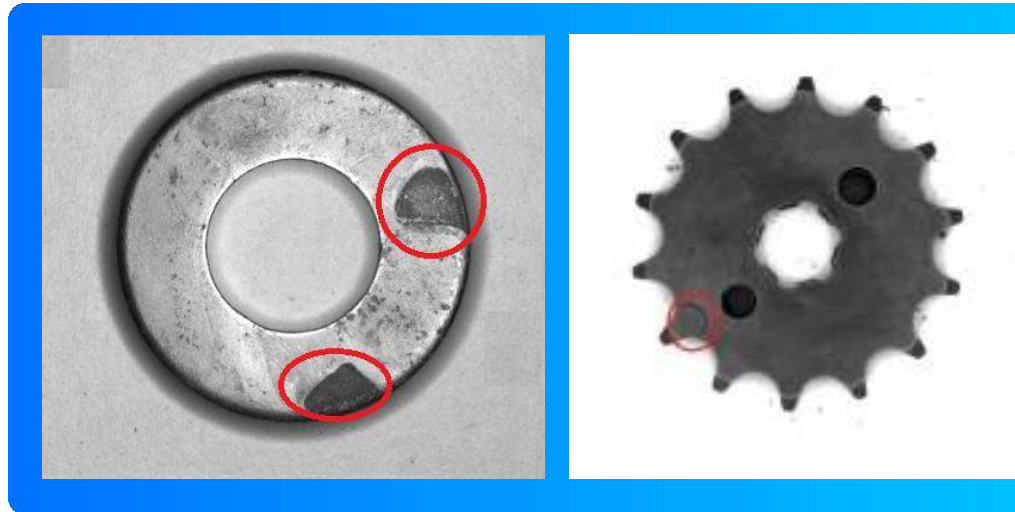
## Inspections Made Easy

- Run as a Turn-Key system
- Simple Setup and Adjustments
- Short Setup Time for multiple codes

- Intuitive UI
- Automatic operation 24/7

## Inspection Criteria

- Multiple heights
- Multiple Width Thread
- Angle
- Chamfer Angle Head
- AC/AF
- Head Roundness



## DATASHEET

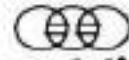
### Part's Dimensional Range

Length min/max	Up to 40 mm
Width min/max	Up to 40 mm

### Machine's Specifications

Type	Auto Profile Testing
Speed (max)	-
Accuracy	$\pm 20$ microns
Machine's Size	35 x 35 x 74 in
No of Cameras	1-2
Requirements	230 V, 4-7 bar

# OUR PRESENCE



**SensoVision**

Taking Research into Product



OVERSEAS

# OUR CLIENTS

**IFB**

Set yourself free

**INDO**  
**SCHÖTTLE**



**SUPERMAX**  
FASTENERS

**Sedex** drillFix  
BOLTEC INDUSTRY CORP.



LAWA FASTENERS

**METLOK**  
Bonding & Sealing Solutions

**K** **raj**  
fasteners



FORGING PVT. LTD.

**SUNHEARRT**  
CERAMIK | BATHWARE

**MH** MAHENDRA  
INDUSTRIES

**Mayur**  
Industries

**Mf** **Meeta Forge**  
AN ISO 9001 : 2008 COMPANY

**Annapoorneshwari**  
**Industries**

Manufacturer of Screws, Studs & Rivets



**R** **Royal Fasteners**  
MANUFACTURERS: QUALITY FASTENERS



**DEEPAK**  
FASTENERS LIMITED

**Supreme Industrial Fasteners**



**Maple Impex**

**RAJESHWARI WASHERS**

Manufacturers & Exporters of Industrial Fasteners

**FIT TIGHT FASTNERS**

AN ISO 9001:2008 COMPANY



**TRUST  
QUALITY  
INTEGRITY**



**SensoVision**

**Taking Research into Product**

## Contact Us :



No. 9, Ground Floor, Raja Bhawan,  
12th A Main, Kodichikkanahalli Main Road,  
Kaveri Nagar, Bommanahalli  
Bangalore - 560068



[www.sensoviz.com](http://www.sensoviz.com)



+91 82172 07768  
+91 98801 35487



[info@sensoviz.com](mailto:info@sensoviz.com)  
[sales@sensoviz.com](mailto:sales@sensoviz.com)